

Total Area - 94.97m ²	
Paving Area	P/A
28.83m	0.61

[illegible]

Details to be required in communication with Accredited Donors:-

FW-EW-01
FW-GF-02
FW-WF-03
FW-WF-01
FW-EW-02
FW-EW-03
FW-EW-04
FW-WF-03
FW-WF-02
FW-WF-01
FW-WF-02
FW-WF-01
FW-WF-02
FW-WF-03

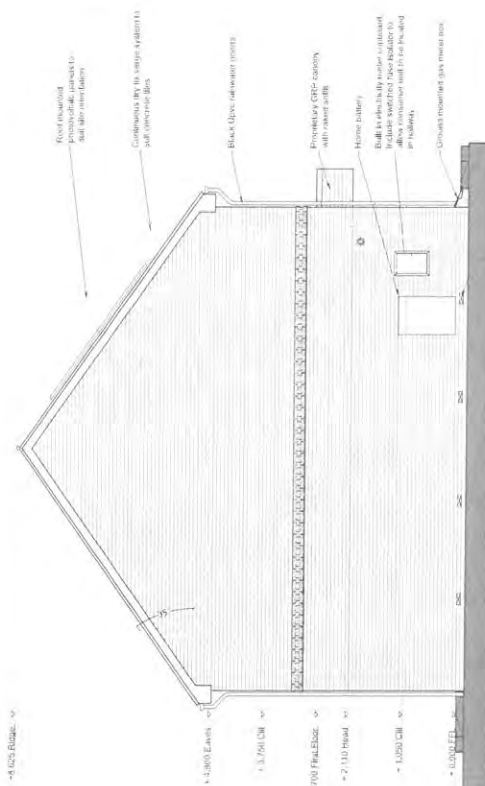
Details to be read in conjunction with Robust Details (6-WI-2) and NHBCC Technical Standards

Order	Life-size flowers (mimic)	Area or Fractal?
1	Paving	✓
2	Approach from parking	✓
3	Approach to entrance	✓
4	Entrance	✓
5	Entrance stairs and lifts	N/A
6	Corridors and hallways	✓
7	Corridors and stairs	✓
8	Entrance level living	✓
9	Entrance level bedrooms	✓
10	Entrance level we and kitchen shower	✓
11	VOC and bathroom walls	✓
12	Feature stair lift and through the floor lift	N/A
13	Front night	✓
14	Entrance	✓
15	Glazed glass facade	✓
16	Glazed glass facade	✓

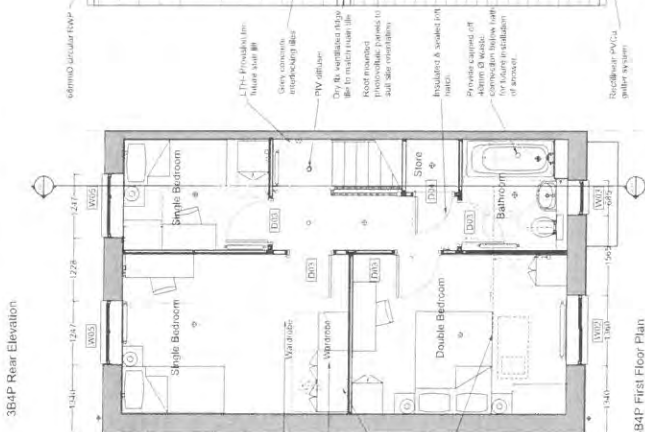
E	Amendments to Heratides	25.0A.15	RT
D	Kajin morpho indices	26.0A.19	RT
C	General Amendments for Placings	15.0A.19	KT
B	Unit type obtained to avoid a default	23.1A.18	RT
A	General Amendments LTH and editorial bibliography updated	56.0A.18	RT
any	Don't know	None	NY

[illegible]FreeWorks

156	A1	Aug 18	PJ	Notes
-----	----	--------	----	-------



384P Side / Gable Elevation



384P First Floor Plan



3B4P Ground Floor Plan

[illegible]

TARGET SPECIFICATION	
External Walls	min. 0.15W/m ² K
Party Wall	min. 0.20W/m ² K
Floor	min. 0.14W/m ² K
Roof (Pitched)	min. 0.20W/m ² K
Windows	min. 1.40W/m ² K
Quartz Drape	min. 1.00W/m ² K
Screen-Clad Doors	min. 1.40W/m ² K
Air Tightness	max. 5 m ³ /hr/m ²